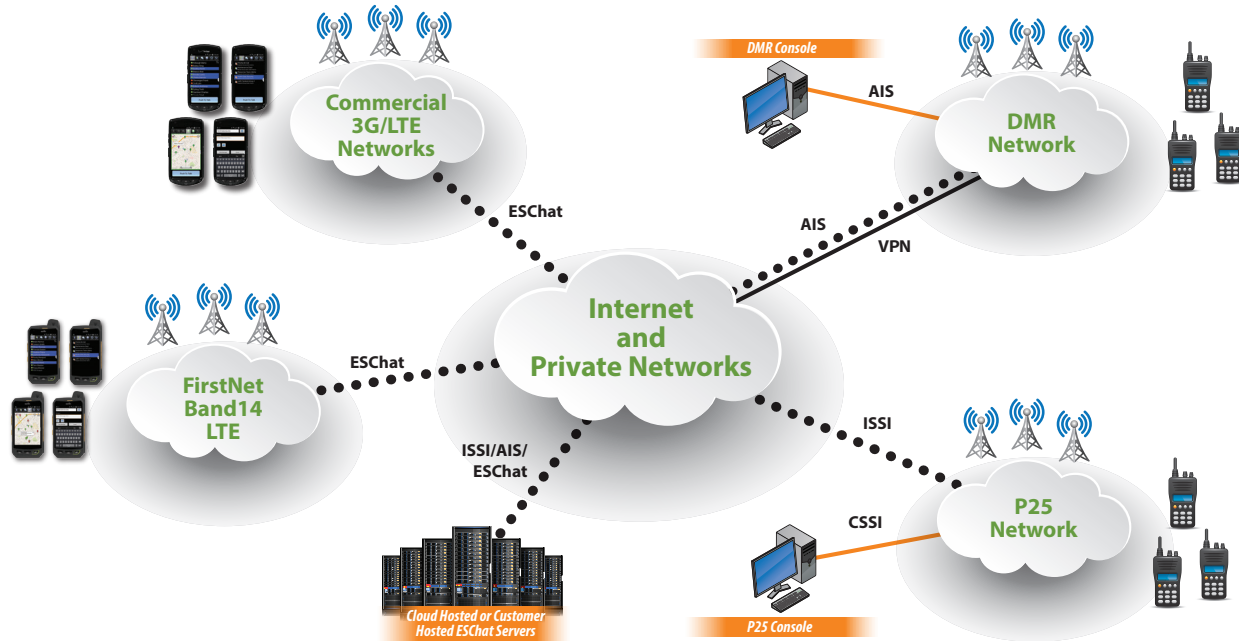




# Enterprise Secure Chat

## ISSI & AIS Interoperability as a Service

Fully Integrated LTE Push to Talk with P25 and DMR Networks



### “Full Featured Interoperability Between LTE and your P25 or DMR Network”

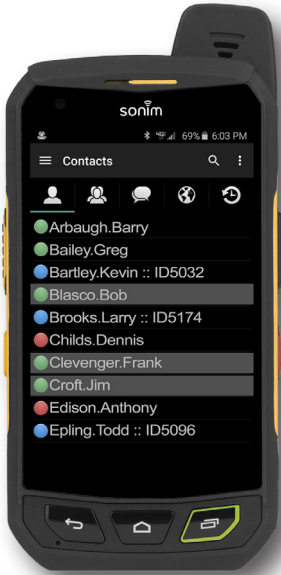
ESChat now offers full featured interoperability between its Secure LTE Push to Talk (PTT) network and both P25 and DMR radio networks. Utilizing the available ISSI (Inter Sub-System Interface) protocol native to the P25 network or the AIS (Application Interface Specification) protocol native to the DMR network, ESChat’s LTE users can communicate with each radio network using Private Calls, Group Calls and Emergency Calls. Additionally, ESChat’s integrated location tracking and mapping feature can display P25 and DMR radio users when GPS is enabled on the radio network.

ESChat servers can be located in the cloud or on the customer’s premisses. For cloud hosted customers, ESChat supports ISSI and AIS connectivity to the P25 and DMR networks as a software service, connecting the customer’s radio network to the ESChat server via VPN.

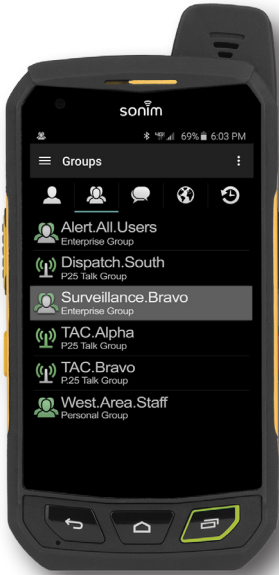
Feature	Basic RoIP/BSI	P25 via ISSI	DMR via AIS
Private Calls (1:1)	✗	✓	✓
Group Calls	✓	✓	✓
Emergency Calls	✗	✓	✓
Inter-Network Radio ID’s	✗	✓	✓
End to End Encryption	✗	✓	✓
Inter-Network Location Display	✗	✓	✓
Reduced Inter-Network Latency	✗	✓	✓
Interoperability as a Service	✗	✓	✓

“Interoperability as a Service” for P25 via ISSI and DMR via AIS

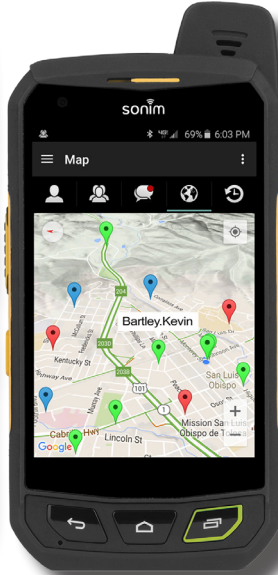
# Full Featured PTT over LTE Interoperability for P25 & DMR



**Integrated Contact List**



**Integrated Group List**



**Integrated GPS Display**



**iPad with Integrated LTE/LMR Contacts & GPS Location Display**



**P25/DMR Radio**



**Professional Dispatch Console Integration via CSSI and AIS**

## ESChat Group and User Presence Codes

- |                                  |                                      |   |   |
|----------------------------------|--------------------------------------|---|---|
| LTE Group Not Active             | P25/DMR Group Not Active             | LTE Contact is Available                | Contact is in Silent Mode                       |
| LTE Group Active in Call         | P25/DMR Group Active in Call         | P25 or DMR Radio Contact                | Contact has Signed Out of ESChat                |
| Blocked LTE Group Not Active     | Blocked P25/DMR Group Not Active     | Contact is on other PTT Call            | Contact's device is Off or Out of Coverage Area |
| Blocked LTE Group Active in Call | Blocked P25/DMR Group Active in Call | Contact is in Do Not Disturb (DnD) Mode | Contact is Blocked                              |

SLA Document ID: ESChat.2016.03.08-001 - C0.1a

ESChat and the ESChat logo are registered trademarks of San Luis Aviation, Inc.

Android is a registered trademark of Google Inc.

Apple, the Apple logo, iPhone, and Mac OS are trademarks of Apple Inc., Registered in the U.S. and other countries.

XP5, XP6 and XP7 are registered trademarks of Sonim Technologies.

Scout is a registered trademark of Avtec Inc.

