



Enterprise Secure Chat

The Leading Secure Push to Talk Solution



Designed for government and business enterprise use, ESChat includes a rich feature set supporting the needs of the serious work force.

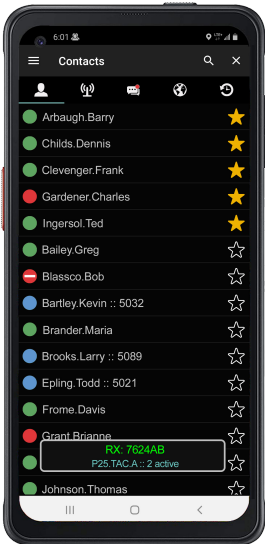
- Government
- Military
- Utilities
- Healthcare
- Public Safety
- Construction
- Transportation
- Education

ESChat set the standard for broadband Push-to-Talk service, offering a host of unparalleled capabilities, including:

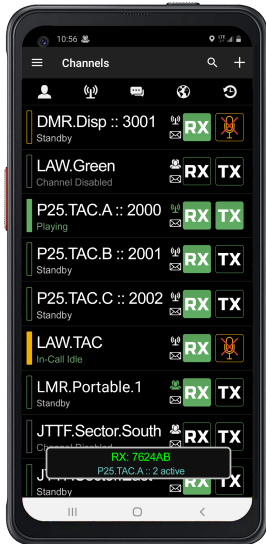
- PTT Service with 99.999% Mission Critical Service Availability
- P25 Interoperability via ISSI with AES-256 Encryption
- P25 Encryption key distribution via TIA-102 KMF/OTAR
- AIS Integration for DMR Networks
- Multi-Call Mode supports up to four simultaneous calls with Priority Scan
- Carrier QoS available today with Verizon Wireless and AT&T
- QPP available today for FirstNet™ & Verizon Frontline Subscribers
- Wireless Carrier Independent and Cross Carrier Capable
- Fastest Call Setup and Best MOS Voice Quality Scores
- Live and Historical (Bread Crumb) Location Tracking
- In-Call Preemption and Priority based call override
- Late Join and Re-Join on Group Calls
- Complete user account management via the handset or web



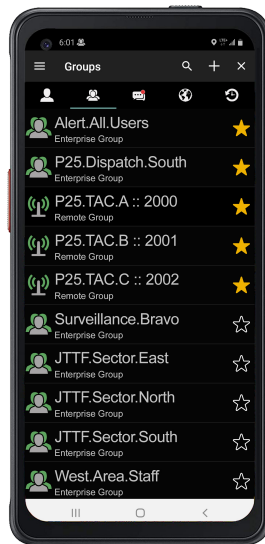
ESChat Client Applications for Android, iOS and Windows Personal Computers



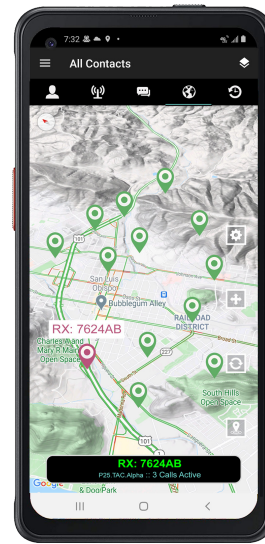
Contacts Tab



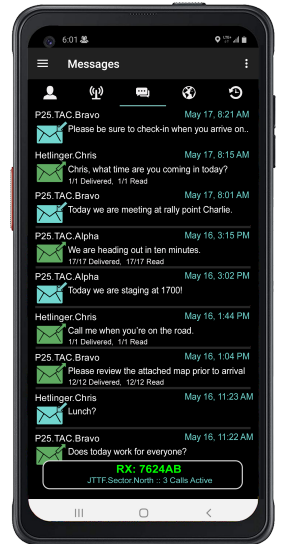
Channels Tab



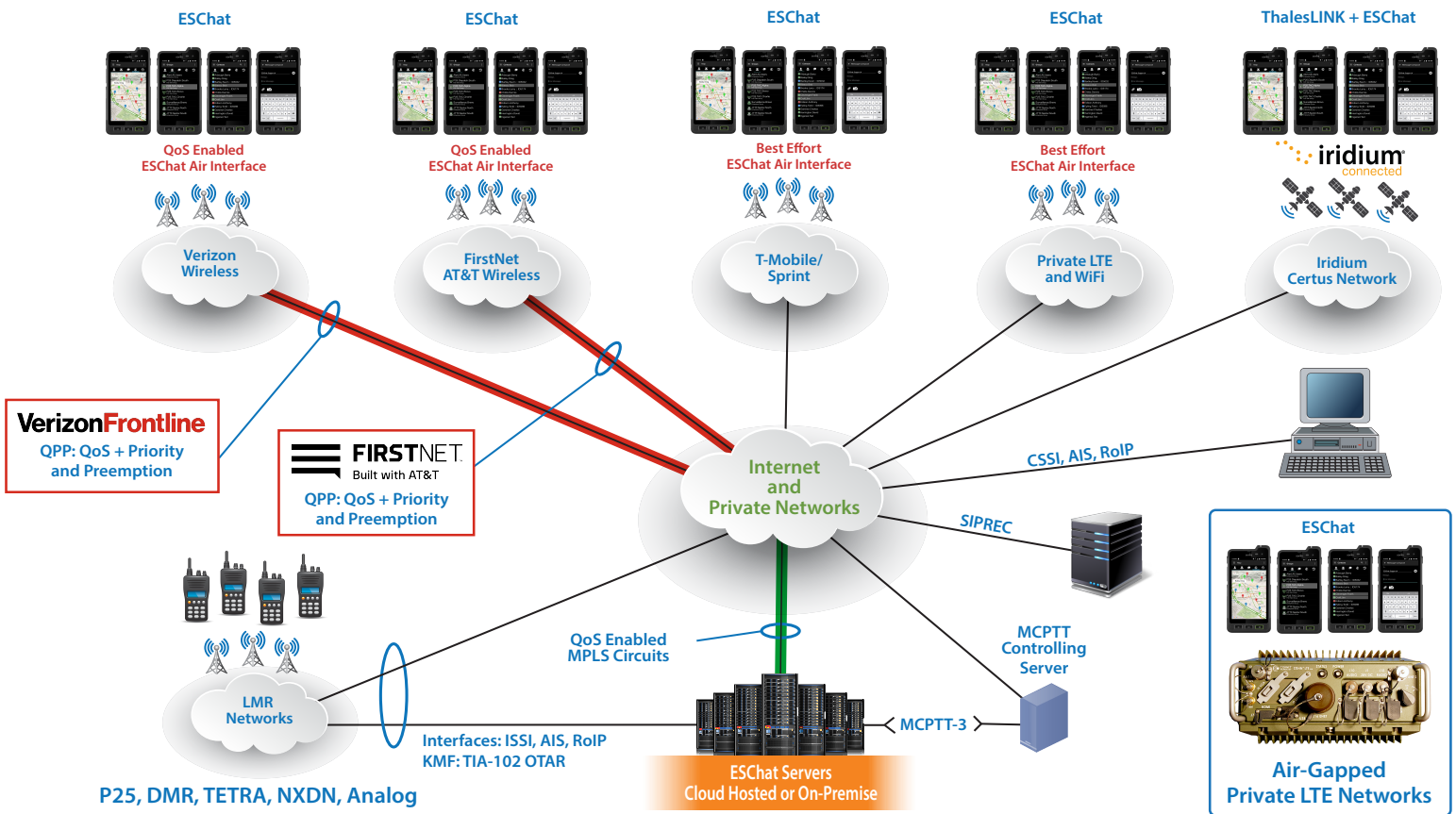
Groups Tab



Map Tab



Message Tab



Additional Features

- AES-256 Voice & Data Encryption
- Dual Mode MCPTT Compatible
- Multi-Call Mode with Priority Scan
- Floor Control Indication
- User and Group Management from:
 - Web based user interface, and
 - Handset User Interface
- Instant Private, Adhoc & Group Calling
- Online Knowledge Base
- OAuth2 Support for Single-Sign-On (SSO)
- CALEA Compliant
- PC Based Dispatch Client Available
- Easy to use Contact and Group Selection
- Cloud or Customer Hosted Options
- SDK Partner Program Available
- Live Customer Support 24/7/365
- Contact List Size: 895 Users
- Maximum Group Size:

- Personal Group:	250
- Member Group:	250
- Open Group:	250
- Closed Group:	250
- Dispatch Group:	250
- Surveillance Channel:	250
- Unicast Radio Channel:	250
- Trunked Group:	3,000